

K3 POWER



- LED Wandleuchte
- Gehäuse aus Aluminiumdruckguss
- Oberflächenbehandlung für Aluminium: Beizen + Phosphorchromatieren + Epoxidgrundierung + Lackierung mit UV-stabilisiertem Epoxidpulver
- Erhältlich in den Farben weiß, anthrazit und aluminiumgrau
- Schutzart: IP65
- Schutzklasse: II
- Integriertes elektronisches Versorgungsteil

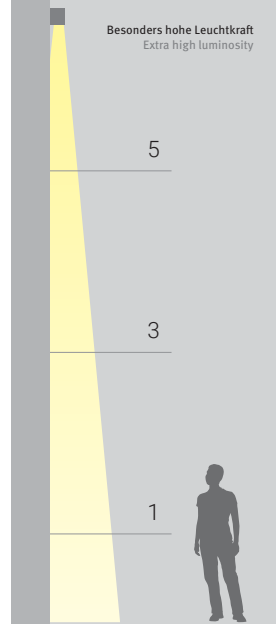
Auf Anfrage

- Gehäuse Edelstahl
- RGBW
- Ausführung mit 3 Lichtaustritten

- LED wall luminaire
- Body of die-cast aluminium
- Surface treatment of aluminium: pickling+ phosphorus chromate + epoxy coating + varnish with UV-stabilized epoxy powder
- Housing colors white, anthracite and aluminium grey
- Protection Rating: IP65
- Protection Class: II
- Built-in electronic power supply

On request

- Housing of stainless steel
- RGBW
- Version with 3 light emissions



K3 POWER
LED Wandleuchte | LED wall luminaire
230V/50Hz / CRI >80

Gefrästes und gehärtetes Glas | Milled and tempered glass

Beam angle	Light emission	Power
1x 20°	1-facher Lichtaustritt One-sided light emission	11 W
4000 K	○ K3-1NW1PE ● K3-1NW6PE ● K3-1NW7PE	1060 lm
3000 K	○ K3-1WW1PE ● K3-1WW6PE ● K3-1WW7PE	1060 lm

Beam angle	Light emission	Power
1x 50°	1-facher Lichtaustritt One-sided light emission	11 W
4000 K	○ K3-1NW1PB ● K3-1NW6PB ● K3-1NW7PB	927 lm
3000 K	○ K3-1WW1PB ● K3-1WW6PB ● K3-1WW7PB	927 lm

Beam angle	Light emission	Power
2x 20°	2-facher Lichtaustritt Two-sided light emission	22 W
4000 K	○ K3-2NW1PE ● K3-2NW6PE ● K3-2NW7PE	2120 lm
3000 K	○ K3-2WW1PE ● K3-2WW6PE ● K3-2WW7PE	2120 lm

Beam angle	Light emission	Power
2x 50°	2-facher Lichtaustritt Two-sided light emission	22 W
4000 K	○ K3-2NW1PB ● K3-2NW6PB ● K3-2NW7PB	1854 lm
3000 K	○ K3-2WW1PB ● K3-2WW6PB ● K3-2WW7PB	1854 lm

Beam angle	Light emission	Power
20°/50°	2-facher Lichtaustritt Two-sided light emission	22 W
4000 K	○ K3-2NW1PEB ● K3-2NW6PEB ● K3-2NW7PEB	1987 lm
3000 K	○ K3-2WW1PEB ● K3-2WW6PEB ● K3-2WW7PEB	1987 lm

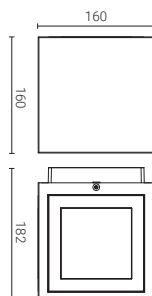
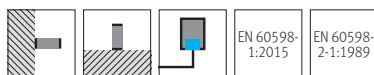
Beam angle	Light emission	Power
1x 20°	1-facher Lichtaustritt One-sided light emission	19 W
4000 K	○ K3-18NW1E ● K3-18NW6E ● K3-18NW7E	1920 lm
3000 K	○ K3-18WW1E ● K3-18WW6E ● K3-18WW7E	1920 lm

Beam angle	Light emission	Power
1x 50°	1-facher Lichtaustritt One-sided light emission	19 W
4000 K	○ K3-18NW1B ● K3-18NW6B ● K3-18NW7B	1690 lm
3000 K	○ K3-18WW1B ● K3-18WW6B ● K3-18WW7B	1690 lm

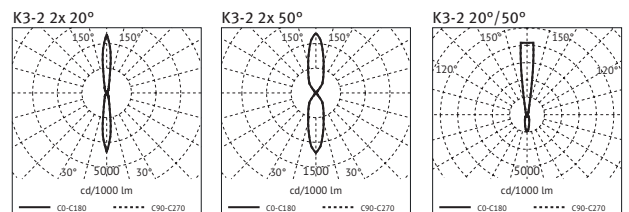
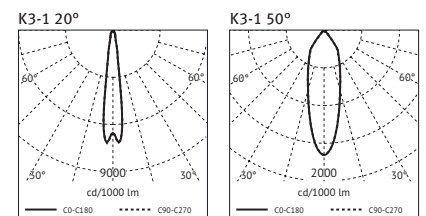
Beam angle	Light emission	Power
2x 20°	2-facher Lichtaustritt Two-sided light emission	36 W
4000 K	○ K3-36NW1E ● K3-36NW6E ● K3-36NW7E	3800 lm
3000 K	○ K3-36WW1E ● K3-36WW6E ● K3-36WW7E	3800 lm

Beam angle	Light emission	Power
2x 50°	2-facher Lichtaustritt Two-sided light emission	36 W
4000 K	○ K3-36NW1B ● K3-36NW6B ● K3-36NW7B	3380 lm
3000 K	○ K3-36WW1B ● K3-36WW6B ● K3-36WW7B	3380 lm

Beam angle	Light emission	Power
20°/50°	2-facher Lichtaustritt Two-sided light emission	36 W
4000 K	○ K3-36NW1EB ● K3-36NW6EB ● K3-36NW7EB	3610 lm
3000 K	○ K3-36WW1EB ● K3-36WW6EB ● K3-36WW7EB	3610 lm

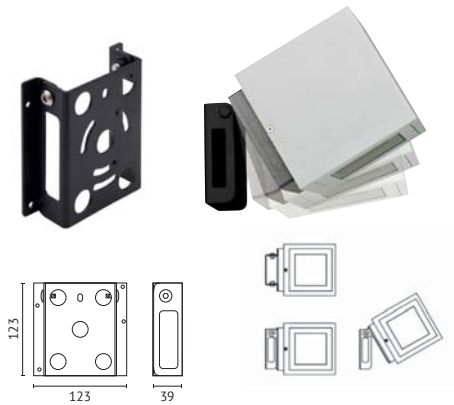


○ Weiß | White ● Anthrazit | Anthracite ● Aluminiumgrau | Aluminium grey



K3 POWER

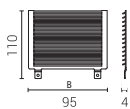
Zubehör | Accessories



Befestigungsplatte | Articulated bracket

Z-BK3POWER

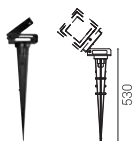
Bügel zur Wandmontage, max. Drehung 90°, schwarz
Bracket for wall mounting, wall mounting, 90° pivotable, black



Abblendgitter | Anti-glare louvre

Z-AK3POWER

Zur Innenmontage | To be installed inside



Erdspieß | Spike

S-K3POWER

Inkl. Befestigungsplatte
With articulated bracket



Edelstahlplatte | Stainless steel plate

A-K3POWER

Inkl. Befestigungsplatte
With articulated bracket



